

SP - Global Opportunities R

Factsheet -March 2017

eurinvest
partners

Fund managers comments

The funds level of equity risk remains defensive at 30%. The Fund is up + 0,95% in March. During the month of March, we maintained all our position unchanged. The interest rates of the 10 year German Bund was flat.



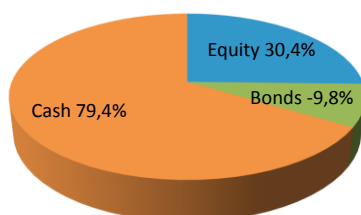
Jean-Marc Michelet

The equity market has performed positively in Europe +5,46% compared to negative markets in China (-0,24% , Japan -1,10% and the US (-0,04%).

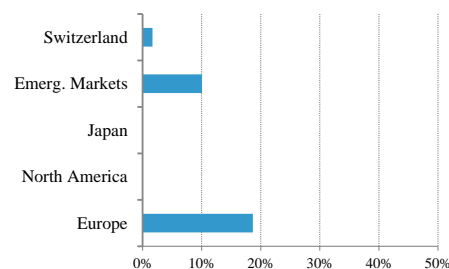
The over performance of Europe against USA is a result of a positive review on expected earnings for the old continent. We witnessed a small decrease in expected earnings in the USA. Since 2006 Europe has consistently under performed the US, hence we expect Europe to overperform in the coming quarters.

We remain short duration and expect yields to go up due to inflation pressures. Trump is loosing in popularity and it looks like his program will be difficult to implement. Hope is fading.

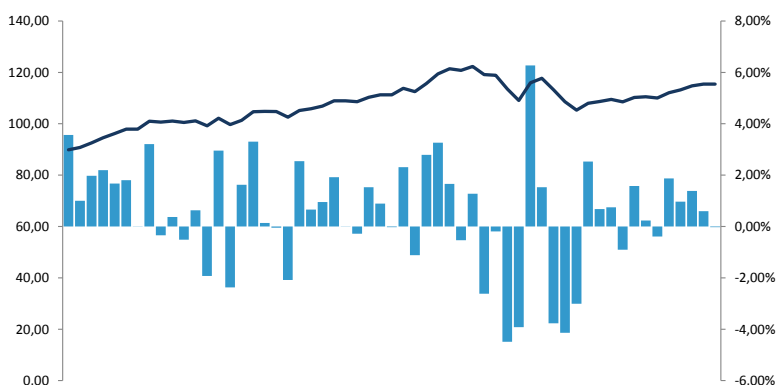
Allocation des actifs



Répartition des actions



Performances cumulées et mensuelles



Performances

| | |
|--------------------|------------|
| 2017 (3 mois) | 0,95% |
| 2016 | 1,32% |
| 2015 | 0,65% |
| 2014 | 7,42% |
| 2013 | 7,04% |
| Volatilité (3 ans) | 8,62% |
| VNI au 28 février | 116,51 EUR |

Top 5 holdings

| |
|--|
| Buy Low China 50A cap50% ups155% sept 2020 |
| Buy Low SX5E cap54% ups 160% aug 2021 |
| Twin Win SX5E +25/+10% |
| 20 Best of 30 High Yield SX5E 19 aug 2020 |
| MSCI Emerging Markets ETF |

DISCLAIMER

All information in this document about SP Global Opportunities (the "Fund") has been prepared by Eurinvest Partners S.A., having its registered office at 1, Rue des Maximins, L-8247 Luxembourg, Grand Duchy of Luxembourg, registered with the Luxembourg Commercial Registry under number B 28.00 ("Eurinvest Partners"), acting in its capacity of management company. This document does not constitute an offer to sell, purchase or subscribe to securities or other assets. The information and estimates contained herein do not constitute investment advice or any other form of recommendation. Eurinvest Partners and the Fund are authorised in the Grand Duchy of Luxembourg and regulated by the "Commission de Surveillance du Secteur Financier" (the "CSSF"). Detailed information about the fund(s) can be found in the sales prospectus together with the articles of association, management regulations or contract conditions, in conjunction with the latest audited annual report. These documents form the sole binding basis for any purchase. Past performance is no guarantee for the future and the investor runs the risk to lose the amount originally invested. The tax treatment of the investment depends on the investor's personal circumstances and may be subject to change. Structured Product is a "société d'investissement à capital variable" (investment company with variable capital, abbreviated SICAV) under Luxembourg law, in the form of a "société anonyme" (abbreviated SA) and accredited by the "Commission de Surveillance du Secteur Financier" (CSSF), the Luxembourg supervisory authority on 19/10/2010 with n° 6830. The prospectus is in accordance with the Luxembourg law of the 13th of February 2007 on "Fonds d'Investissement Spécialisé (FIS)". This offer is only for "well informed investors" under Article 1 of the Luxembourg Law of 13 February 2007 on the "FIS". This offer is not public in nature, in accordance with the Belgian law of 20 July 2004 on certain forms of collective management of investment portfolios and is not subject to the publication of a prospectus approved by the FSMA (formerly CBFA) as the law of June 16th 2006 prescribes. The minimum investment for Belgian residents is 250,000 Euros in accordance with Article 5, §1, 4° of the "ICB"- Law of August 3, 2012. For more information, see the relevant legal documentation, which is available without charge upon request at Eurinvest Partners SA.

| | |
|--------------------------|-----------------------------|
| Gestionnaire | Eurinvest Partners SA |
| Type d'investissement | Lux SICAV-SIF |
| Type d'action | R - Capitalisation |
| Fréquence VNI | Hebdomadaire |
| Taille du fonds | EUR 9,652 million |
| ISIN code | LU0987813747 |
| Bloomberg code | SIFTROR LX |
| Admin. Centrale | Orange Field trust Lux |
| Agent de transfert | Orange Field trust Lux |
| Ag. Payeur & dépositaire | ING Lux |
| Audit | Fidewa Clar |
| Frais de Gestion | 1,3% |
| Frais à la perf. | 15% above EUR 10 yr swap+2% |